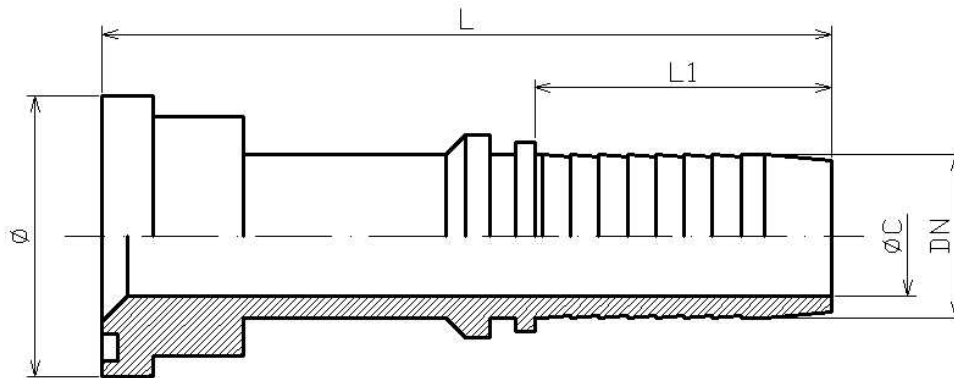


**Brida recta SAE 3000 PSI**



| Artículo  | DN    | Ø    | L     | L1   | ØC  |
|-----------|-------|------|-------|------|-----|
| 241820808 | 1/2"  | 30.2 | 75,5  | 30,5 | 9,5 |
| 241821208 | 1/2"  | 38.1 | 81,75 | 30,5 | 9,5 |
| 241821210 | 5/8"  | 38.1 | 92,8  | 34   | 12  |
| 241821212 | 3/4"  | 38.1 | 99    | 39   | 15  |
| 241821612 | 3/4"  | 44.5 | 107,9 | 39   | 15  |
| 241821616 | 1"    | 44.5 | 115,5 | 47   | 19  |
| 241822016 | 1"    | 50.8 | 113,5 | 47   | 19  |
| 241822020 | 1"1/4 | 50.8 | 117   | 54,5 | 26  |
| 241822420 | 1"1/4 | 60.3 | 130   | 54,5 | 26  |
| 241822424 | 1"1/2 | 60.3 | 125,5 | 58   | 32  |
| 241823224 | 1"1/2 | 71.4 | 133,5 | 58   | 32  |
| 241823232 | 2"    | 71.4 | 151,6 | 72   | 44  |