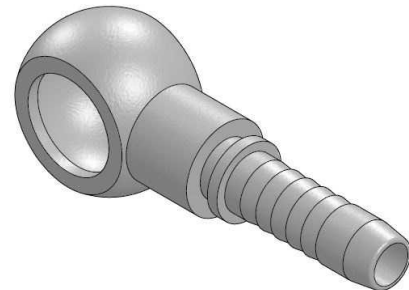
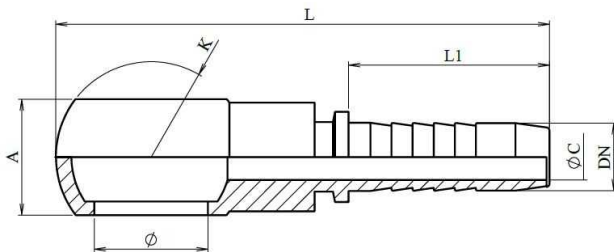


**Banjo BSP**

Mild Steel 1.0737 (or equivalent)



Part n°	DN	Ø	L	L1	ØC	A	K
<b>241110403</b>	3/16"	1/4" BSP	62	24	3	14	24
<b>241110404</b>	1/4"	1/4" BSP	66,5	28	4	14	24
<b>241110405</b>	5/16"	1/4" BSP	67	28	5,5	14	24
<b>241110406</b>	3/8"	1/4" BSP	66,5	29,5	7	14	24
<b>241110604</b>	1/4"	3/8" BSP	70,5	28	4	17	28
<b>241110605</b>	5/16"	3/8" BSP	70,8	28	5,5	17	28
<b>241110606</b>	3/8"	3/8" BSP	72,5	29,5	7	17	28
<b>241110608</b>	1/2"	3/8" BSP	74	30,5	9,5	17	28
<b>241110806</b>	3/8"	1/2" BSP	80,2	29,5	7	23,5	36
<b>241110808</b>	1/2"	1/2" BSP	81,7	30,5	9,5	23,5	36
<b>241111010</b>	5/8"	5/8" BSP	91,2	34	12	23,5	40
<b>241111208</b>	1/2"	3/4" BSP	90,5	30,5	9,5	29	45
<b>241111210</b>	5/8"	3/4" BSP	93,7	34	12	29	45
<b>241111212</b>	3/4"	3/4" BSP	99,5	39	15	29	45
<b>241111616</b>	1"	1" BSP	128	47	19	38	58