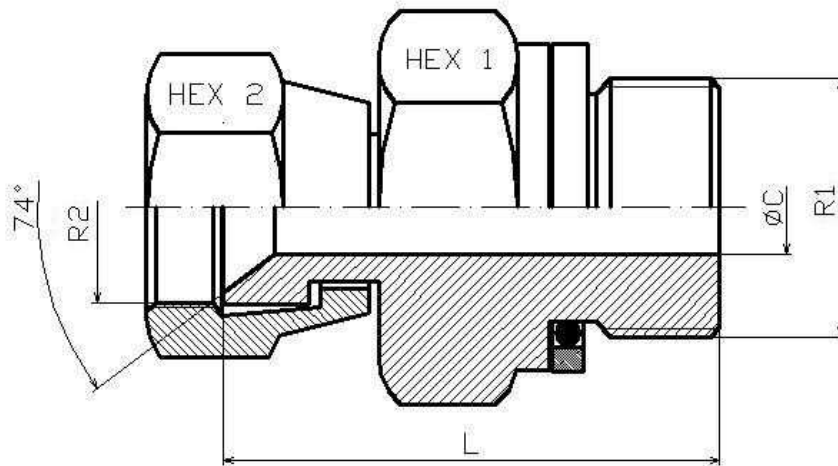


Adaptor swivel nut JIC-male BSP

Part nº	ØD1	ØD2	R1	R2	L	HEX 1	HEX 2	ØC
S1800610	6	1/4	M 1/8" BSP	H 7/16" 20h UNF	24	14	14	4
S1800813	8	5/16	M 1/4" BSP	H 1/2" 20h UNF	29,5	19	17	4
S1800817	8	5/16	M 3/8" BSP	H 1/2" 20h UNF				
S1801013	10	3/8	M 1/4" BSP	H 9/16" 18h UNF	30	19	19	6
S1801017	10	3/8	M 3/8" BSP	H 9/16" 18h UNF	32,5	22	19	6
S1801217	12	1/2	M 3/8" BSP	H 3/4" 16h UNF	31	22	22	10
S1801621	14-15-16	5/8	M 1/2" BSP	H 7/8" 14h UNF	36,7	27	27	10
S1802026	18-20	3/4	M 3/4" BSP	H 1"1/16 12h UNF	41	36	32	15
S1802533	25	1	M 1" BSP	H 1"5/16 12h UNF	45	46	41	20
S1803242	30-32	1 1/4	M 1"1/4 BSP	H 1"5/8 12h UNF	52	50	50	26
S1803848	38	1 1/2	M 1"1/2 BSP	H 1"7/8 12h UNF	61,5	55	55	32,5