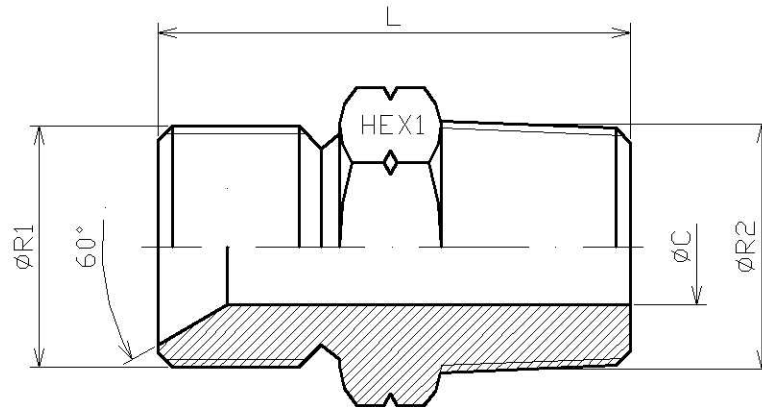


**Adaptor BSP male (60°)-NPT male**

Part nº	R1	R2	L	HEX 1	ØC
<b>S101402</b>	1/8" BSP	1/8" NPT	24,5	14	3,5
<b>S101404</b>	1/4" BSP	1/4" NPT	32,5	17	4,7
<b>S101406</b>	3/8" BSP	3/8" NPT	34	17	7,9
<b>S101408</b>	1/2" BSP	1/2" NPT	40	27	11,1
<b>S101412</b>	3/4" BSP	3/4" NPT	43,5	32	16,7
<b>S101416</b>	1" BSP	1" NPT	57	41	22,2
<b>S101420</b>	1"1/4 BSP	1"1/4 NPT	59	50	28,6
<b>S101424</b>	1"1/2 BSP	1"1/2 NPT	62	55	33,3
<b>S101432</b>	2" BSP	2" NPT	72	70	46