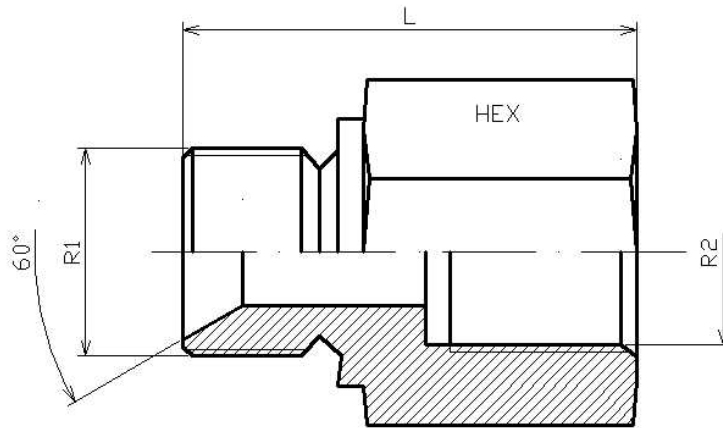


Adaptor BSP male (60°) - BPS fixed female

Part nº	R1	R2	HEX 1	L
A105002	1/8" BSP	1/8" BSP	14	24
A105004	1/4" BSP	1/4" BSP	19	34
A105006	3/8" BSP	3/8" BSP	22	31
A105008	1/2" BSP	1/2" BSP	27	40,5
A105012	3/4" BSP	3/4" BSP	32	45
A105016	1" BSP	1" BSP	41	50,5
A105020	1"1/4 BSP	1"1/4 BSP	50	51
A105024	1"1/2 BSP	1"1/2 BSP	55	65
A105032	2" BSP	2" BSP	70	65