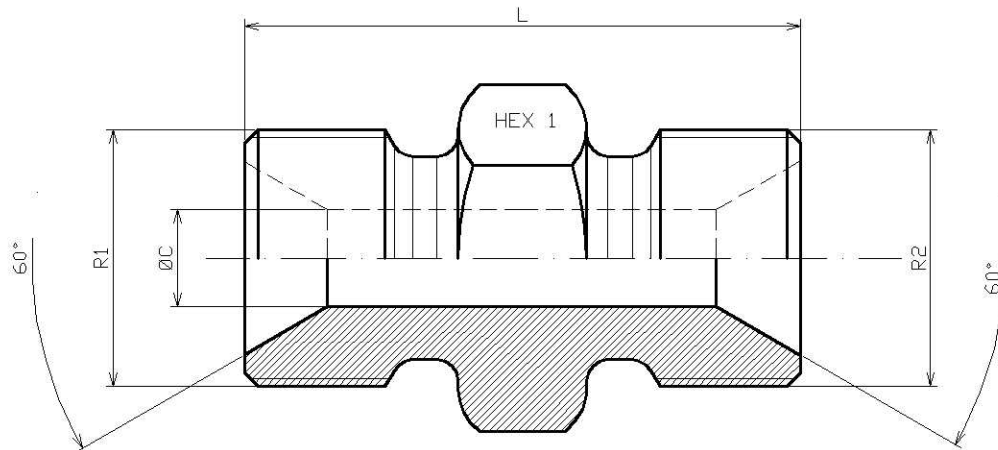


**Adaptor Metric male-male (60°)**

Part n°	R1	R2	L	HEX 1	ØC
<b>S101612</b>	M12x1.5	M12x1.5	26	14	4,5
<b>S101614</b>	M14x1.5	M14x1.5	26	17	7
<b>S101616</b>	M16x1.5	M16x1.5	32	17	8
<b>S101618</b>	M18x1.5	M18x1.5	33	19	10
<b>S101622</b>	M22x1.5	M22x1.5	36	24	12
<b>S101626</b>	M26x1.5	M26x1.5	36	30	16