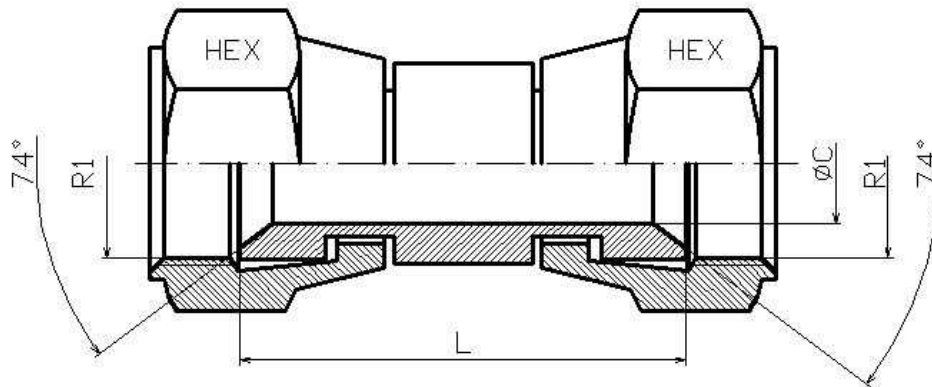


Straight fitting with crimped nut JIC 37°

Part n°	ØD1	ØD2	R1	L	HEX 1	ØC
S73006	6	1/4	7/16" 20h UNF	21	14	4
S73008	8	5/16	1/2" 20h UNF	23	17	4
S73010	10	3/8	9/16" 18h UNF	25	19	6
S73012	12	1/2	3/4" 16h UNF	30	24	10
S73016	14-15-16	5/8	7/8" 14h UNF	31,4	27	12
S73020	18-20	3/4	1"1/16 12h UNF	36	32	15
S73025	25	1	1"5/16 12h UNF	36	41	20