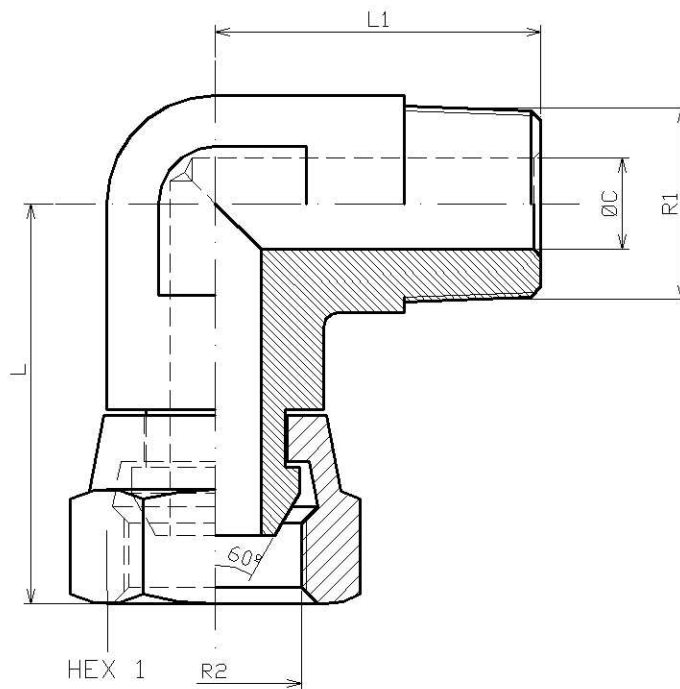


**90° Elbow BSPT male-BSP swivel female (60°)
 forge**



Part nº	R1	R2	L	L1	HEX 1	ØC
S119904	M 1/4" BSPT	F 1/4" BSP	34	25,4	19	8
S119906	M 3/8" BSPT	F 3/8" BSP	38	28,5	22	10
S119908	M 1/2" BSPT	F 1/2" BSP	44	32,5	27	14
S119912	M 3/4" BSPT	F 3/4" BSP	55	41,3	32	18
S119916	M 1" BSPT	F 1" BSP	61	44,5	41	22