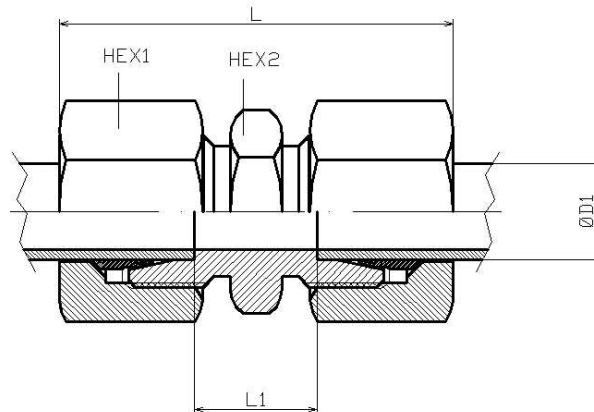


Straight coupling (pipe-pipe)

Part nº	ØD1	Serie	Working Pressure (bar)	L	L1	HEX 1	HEX 2
DLL 4	4	LL	100	31	12.0	10	9
DLL 6	6	LL	100	32	9.0	12	11
DLL 8	8	LL	100	35	12.0	14	12
DL 6	6	L	500	39.0	10.0	14	12
DL 8	8	L	500	40.0	11.0	17	14
DL 10	10	L	500	42.0	13.0	19	17
DL 12	12	L	400	43.0	14.0	22	19
DL 15	15	L	400	46.0	16.0	27	24
DL 18	18	L	400	48.0	16.0	32	27
DL 22	22	L	250	52.0	20.0	36	32
DL 28	28	L	250	54.0	21.0	41	41
DL 35	35	L	250	63.0	20.0	50	46
DL 42	42	L	250	66.0	21.0	60	55
DS 6	6	S	630	45.0	16.0	17	14
DS 8	8	S	630	47.0	18.0	19	17
DS 10	10	S	630	49.0	17.0	22	19
DS 12	12	S	630	51.0	19.0	24	22
DS 14	14	S	630	57.0	22.0	27	24
DS 16	16	S	420	57.0	21.0	30	27
DS 20	20	S	420	66.0	23.0	36	32
DS 25	25	S	420	74.0	26.0	46	41
DS 30	30	S	420	80.0	27.0	50	46
DS 38	38	S	315	90.0	29.0	60	55