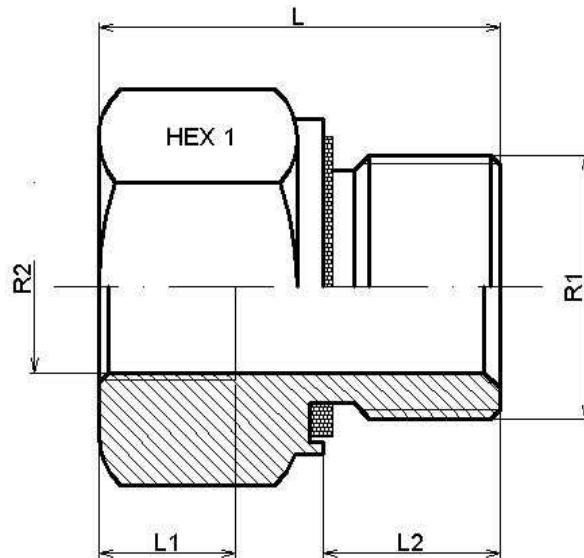


Male-female reducing adaptor BSP cyl with captive seal

Part nº	R1	R2	Working Pressure (bar)	L	L1	L2	HEX 1
RI-R 1/8 R 1/4WD	M 1/8"BSP	H 1/4"BSP	400	31	17	8	19
RI-R 1/8 R 3/8WD	M 1/8"BSP	H 3/8"BSP	400	32	17	8	24
RI-R 1/4 R 1/8WD	M 1/4"BSP	H 1/8"BSP	400	28	12	12	19
RI-R 1/4 R 3/8WD	M 1/4"BSP	H 3/8"BSP	400	36	17	12	24
RI-R 1/4 R 1/2 WD	M 1/4"BSP	H 1/2"BSP	400	40	20	12	27
RI-R 1/4 R 3/4 WD	M 1/4"BSP	H 3/4"BSP	400	43	22	12	36
RI-R 3/8 R 1/8WD	M 3/8"BSP	H 1/8"BSP	400	22,5	9	12	22
RI-R 3/8 R 1/4 WD	M 3/8"BSP	H 1/4"BSP	400	36	17	12	22
RI-R 3/8 R 1/2WD	M 3/8"BSP	H 1/2"BSP	400	41	20	12	27
RI-R 3/8 R 3/4WD	M 3/8"BSP	H 3/4"BSP	315	44	22	12	36
RI-R 1/2 R 1/8WD	M 1/2"BSP	H 1/8"BSP	400	24	9	14	27
RI-R 1/2 R 1/4WD	M 1/2"BSP	H 1/4"BSP	400	24	13	14	27
RI-R 1/2 R 3/8WD	M 1/2"BSP	H 3/8"BSP	400	36	17	14	27
RI-R 1/2 R 3/4WD	M 1/2"BSP	H 3/4"BSP	315	46	22	14	36
RI-R 1/2 R 1WD	M 1/2"BSP	H 1"BSP	315	49	24,5	14	41
RI-R 1/2 R 1 1/4WD	M 1/2" BSP	H 1"1/4 BSP	315	53	26,5	14	55
RI-R 3/4 R 1/4WD	M 3/4"BSP	H 1/4"BSP	315	26	13	16	32
RI-R 3/4 R 3/8WD	M 3/4"BSP	H 3/8"BSP	315	26	14	16	32
RI-R 3/4 R 1/2WD	M 3/4"BSP	H 1/2"BSP	315	41	20	16	32
RI-R 3/4 R 1WD	M 3/4"BSP	H 1"BSP	315	51	24,5	16	41
RI-R 3/4 R 1 1/4WD	M 3/4"BSP	H 1"1/4 BSP	315	55	26,5	16	55
RI-R 3/4 R 1 1/2WD	M 3/4"BSP	H 1"1/2 BSP	250	57	28,5	16	60
RI-R 1 R 1/4WD	M 1"BSP	H 1/4"BSP	315	29	14	18	41
RI-R 1 R 3/8WD	M 1"BSP	H 3/8"BSP	315	29	14	18	41
RI-R 1 R 1/2WD	M 1"BSP	H 1/2"BSP	315	29	16	18	41
RI-R 1 R 3/4WD	M 1"BSP	H 3/4"BSP	315	47	22	18	41

Male-female reducing adaptor BSP cyl with captive seal

Part n°	R1	R2	Working Pressure (bar)	L	L1	L2	HEX 1
RI-R 1 R 1 1/4WD	M 1"BSP	H 1"1/4BSP	315	57	26,5	18	55
RI-R 1 R 1 1/2WD	M 1"BSP	H 1"1/2 BSP	250	59	28,5	18	60
RI-R 1 1/4 R 1/2WD	M 1"1/4BSP	H 1/2"BSP	315	32	16	20	50
RI-R 1 1/4 R 3/4WD	M 1"1/4 BSP	H 3/4"BSP	315	32	18	20	50
RI-R 1 1/4 R 1WD	M 1"1/4 BSP	H 1"BSP	315	52	24,5	20	50
RI-R 1 1/4 R 1 1/2WD	M 1"1/4 BSP	H 1"1/2 BSP	250	60	28,5	20	60
RI-R 1 1/2 R 1/2WD	M 1"1/2 BSP	H 1/2"BSP	250	36	16	22	55
RI-R 1 1/2 R 3/4WD	M 1"1/2 BSP	H 3/4"BSP	250	36	18	22	55
RI-R 1 1/2 R 1WD	M 1"1/2 BSP	H 1" BSP	250	36	20	22	55
RI-R 1 1/2 R 1 1/4WD	M 1"1/2 BSP	H 1"1/4 BSP	250	58	26,5	22	55