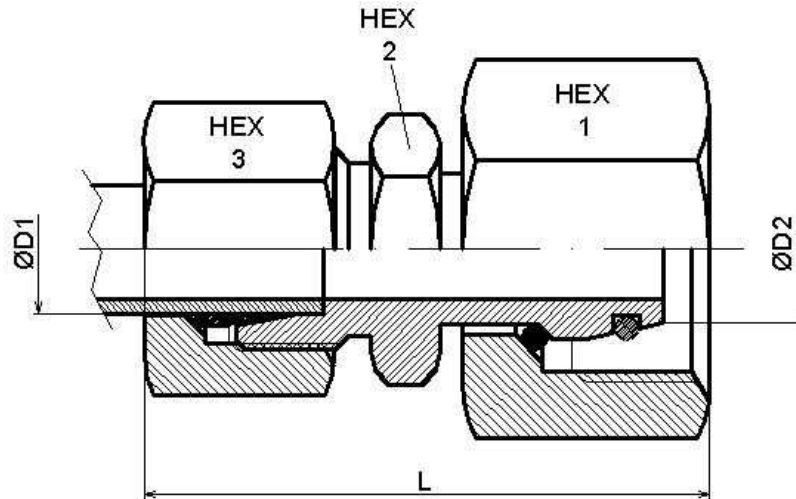


Standpipe reducers with taper (L)



Part nº	ØD1	ØD2	Serie	Working Pressure (bar)	L	HEX 1	HEX 2	HEX 3
KORL 8-6TLM	6	8	L	500	39,5	17	12	14
KORL 10-6TLM	6	10	L	500	40	19	14	14
KORL 10-8 TLM	8	10	L	500	40	19	14	17
KORL 12-6TLM	6	12	L	400	41,5	22	17	14
KORL 12-8TLM	8	12	L	400	41,5	22	17	17
KORL 12-10TLM	10	12	L	400	42,5	22	17	19
KORL 15-6TLM	6	15	L	400	43.5	27	19	14
KORL 15-8TLM	8	15	L	400	43.5	27	19	17
KORL 15-10TLM	10	15	L	400	44.5	27	19	19
KORL 15-12TLM	12	15	L	400	44.5	27	19	22
KORL 18-6TLM	6	18	L	400	44.5	32	24	14
KORL 18-8TLM	8	18	L	400	44.5	32	24	17
KORL 18-10TLM	10	18	L	400	45,5	32	24	19
KORL 18-12TLM	12	18	L	400	45,5	32	24	22
KORL 18-15TLM	15	18	L	400	46,5	32	24	27
KORL 22-6TLM	6	22	L	250	47	36	27	14
KORL 22-8TLM	8	22	L	250	47	36	27	17
KORL 22-10TLM	10	22	L	250	48.0	36	27	19
KORL 22-12TLM	12	22	L	250	48.0	36	27	22
KORL 22-15TLM	15	22	L	250	49.0	36	27	27
KORL 22-18TLM	18	22	L	250	50	36	27	32
KORL 28-6TLM	6	28	L	250	49	41	32	14
KORL 28-8TLM	8	28	L	250	49	41	32	17
KORL 28-10TLM	10	28	L	250	50	41	32	19
KORL 28-12TLM	12	28	L	250	50	41	32	22
KORL 28-15TLM	15	28	L	250	51	41	32	27

Standpipe reducers with taper (L)

Part n°	ØD1	ØD2	Serie	Working Pressure (bar)	L	HEX 1	HEX 2	HEX 3
KORL 28-18TLM	18	28	L	250	52	41	32	32
KORL 28-22TLM	22	28	L	250	54	41	32	36
KORL 35-15TLM	15	35	L	250	55	50	41	27
KORL 35-18TLM	18	35	L	250	56	50	41	32
KORL 35-22TLM	22	35	L	250	58	50	41	36
KORL 35-28TLM	28	35	L	250	58	50	41	41
KORL 42-18TLM	18	42	L	250	58,5	60	50	32
KORL 42-22TLM	22	42	L	250	60,5	60	50	36
KORL 42-28TLM	28	42	L	250	61.5	60	50	41
KORL 42-35TLM	35	42	L	250	64,5	60	50	50